

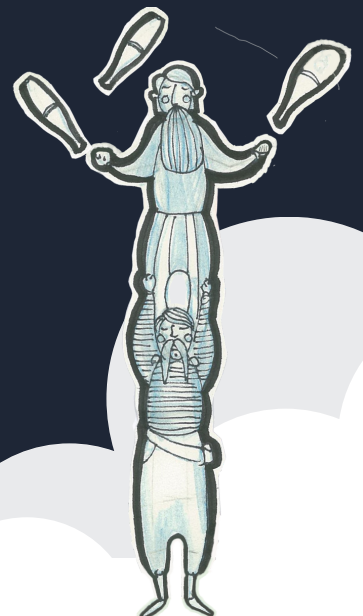
EARTHBOUND MISFITS

THE SCIENCE OF CIRCUS

Juggling with Forces

BOOK NOW
SHOWS £175 EACH
FOLLOW UP WORKSHOPS £60 EACH.

Key Stage 1 & 2 Primary Science Show



JUGGLING WITH FORCES

THE SHOW

JOIN MARK MISFIT ON A MADCAP JOURNEY OF DISCOVERY AS YOU ENTER THE WORLD OF JUGGLING AND DISCOVER FORCES AND MOTION! THE SHOW CAN BE PERFORMED TO SINGLE KEY STAGE OR MIXED KEY STAGE GROUPS, INDIVIDUAL CLASSES OR WHOLE YEAR GROUPS AND SCHOOLS. AS MARK'S STORY OF BECOMING A JUGGLER UNRAVELS AND WITH THE HELP OF A LITTLE BIT OF COMEDY WE WILL UNLOCK AND UNDERSTAND THE INVISIBLE WORLD OF FORCES AND MOTION THAT IS AROUND US ALL. DRAWING UPON THE SUPERIOR KNOWLEDGE OF THE PARTICIPATING YOUNG SCIENTISTS MARK'S JUGGLING EXPERIMENTS WILL BACK UP AND REFRESH THE KEY POINTS OF FORCES AND MOTION THAT HAVE ALREADY BEEN COVERED IN THE CLASSROOM. THE STUDY GROUP WILL ALSO JOIN HIM ON A TIME TRAVELING JOURNEY INTO HISTORY TO THE VERY MOMENT OF DISCOVERY AND NAMING OF GRAVITY BY SIR ISAAC NEWTON HIMSELF. SO REMEMBER WHAT GOES UP MUST COME DOWN!

THE WORKSHOP

THIS IS A HANDS ON WORKSHOP, TEACHING THE SKILL OF JUGGLING AND LOOKING AT THE FORCES & MOTION THAT ARE AT PLAY. DURING THE HOUR SESSION THE MORE SERIOUS WORK IS DONE AS WE FOLLOW UP THE DISCOVERIES FROM THE SHOW BY LOOKING AT THE EFFECTS OF THE DIFFERENT JUGGLING OBJECTS AND THEIR EFFECTS WHEN FORCE AND MOTION IS APPLIED. THE FORCE OF GRAVITY AND THE VARYING TERMS AND KNOWLEDGE FOR EACH KEY STAGE WILL BE REINFORCED. NO MORE THAN 30 PARTICIPANTS FOR WORKSHOPS



Key Stage 1

We will discover:

- that when things speed up, slow down or change direction, there is a cause [for example, a push or a pull]
- that both pushes and pulls are examples of forces about, and describe the movement of, familiar things [for example, cars going faster, slowing down, Changing direction]

Key Stage 2

We will discover:

- that when objects are pushed or pulled, an opposing pull or push can be felt
- about friction, including air resistance, as a force that slows moving objects and may prevent objects from starting to move
- how to measure forces and identify the direction in which they act
- that objects are pulled downwards because of the gravitational attraction between them and the Earth
- about the forces of attraction and repulsion

Technical details for the show and workshop

Duration of show and workshop: approximately 1 hour each

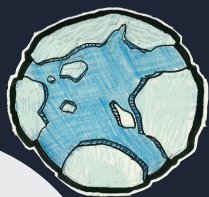
The show can be performed for any number of pupils

Follow up workshops groups can be no bigger than 30 pupils

Key Stage 1 and 2 workshop to be carried out separately

We will try to fit into school time table as much as possible.

What we need from you: School Hall, 1 Table, x2 Chairs



Earthbound Misfits have enhanced DBS, 5 Million Public Liability insurance.

Full risk assessment on application contact mark@earthboundmisfits.co.uk 01472 851029